



RAY*Face*

One-shot 3D Face Scanner

Easy to scan

Taking pictures of patients has never been easier. Easy software operation and fast scanning have minimized inconveniences for patients and operators.

Vivid facial expression

With RCFR (Realistic Color Facial Reconstruction) V2 technology, natural contrast, and skin tone can be produced to reproduce a beautiful face.

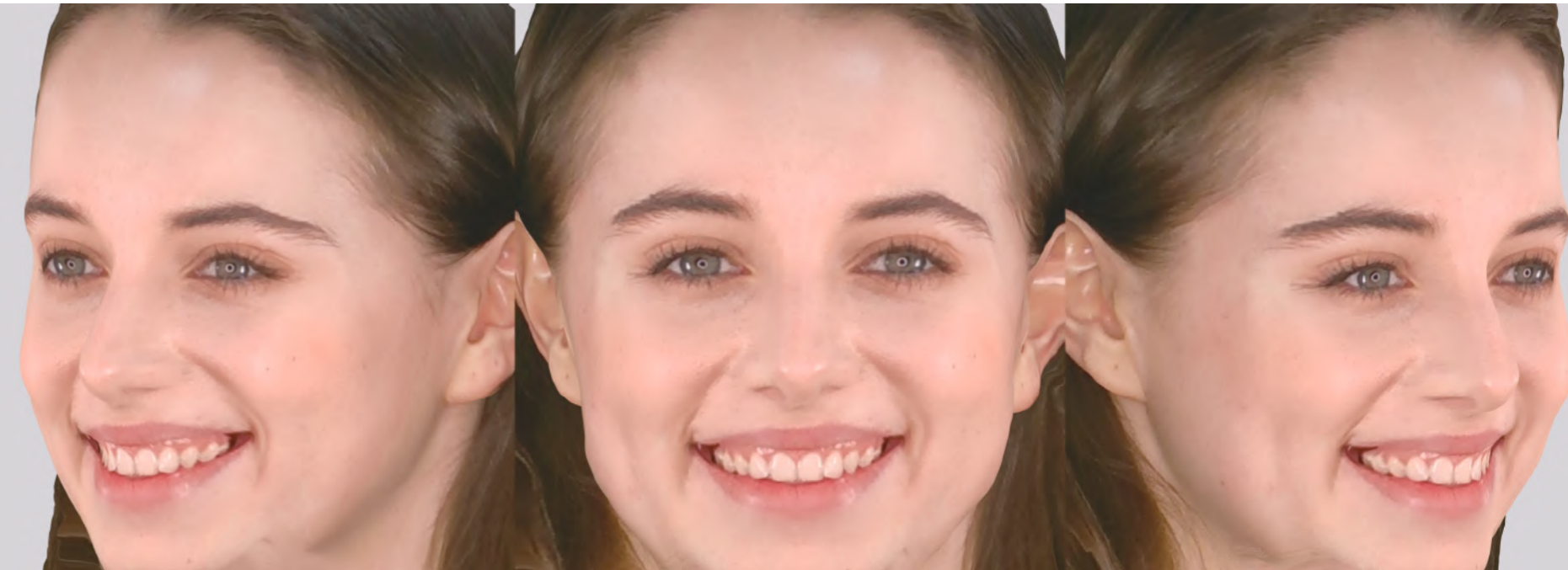
Upgraded 3d face recognition technology

It analyzes the depth and the shape of the face and implements an accurate facial structure through automatic registration technology.



Just like taking a photograph,
Easy one-shot scanning.

RAYFace shoots simultaneously within 0.5 seconds from multiple angles. RAYFace is an innovative scanner that reconstructs your natural smile into high-quality 3D data. Obtain more precise and vivid 3D data with the RAYFace scanner to present a solution that better fits the smile design





High-resolution camera and optimal lighting tech

9 image sensors operate simultaneously to accurately capture the depth of the subject, and creates more realistic 3D data.

The 3D digital lighting technology is safe for the subject's eyes and skin and does not cause fatigue, enabling a face with a natural smile.

Outstanding product design

The curvilinear shapes of RAYFace removes the need for a separate studio space with lighting and cameras.

Open system

RAYFace solution is an open system that allows you to create a new business model by utilizing your existing equipment.

Various applications, infinite possibilities

The field of dentistry

3D scanning technology helps you realize your clinical ideas multifacetedly. One can utilize it for orthodontics, implants, aesthetic, and complex prosthetic treatments.



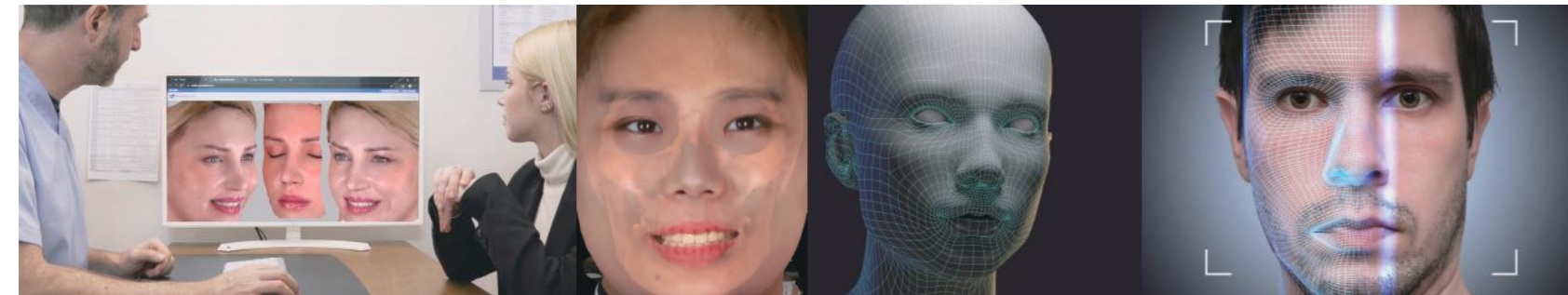
Orthodontics

Implant

Prosthesis

The field of plastic surgery and game industry

RAYFace can be used not only in manufacturing but also in health care, games, and multimedia.



Plastic surgery consultation

CG

Specifications

Model Name	RFS100
Resolution	2 Mega Pixel
FOV(Field Of View)	550 mm x 310 mm
Output formats	OBJ
White LED CCT	5700 K
Dimensions(W x H x D)	813 x 400 x 550 mm 32 x 15.7 x 21.6 in
Weight	12 kg / 26.5 lbs
Power requirements	Input : 100-240V~, 50/60Hz, 1.5A Output : 24Vdc, 3.75A

PC Requirements

	Minimum	Recommended
CPU	2GHz Quad Core	2GHz Quad Core
RAM	8GB	16GB
Storage	500GB HDD	500GB SSD
Monitor	1600 x 900	1920 x 1080
LAN	100Mbps Ethernet	100/1000 Mbps Ethernet
USB	2.0	2.0
Video	OpenGL 3.2 above 2GB RAM	OpenGL 4.0 above 2GB RAM
OS	Microsoft Windows® 7 64bit	Microsoft Windows® 10 64bit

Specifications are subject to change without prior notice





Ray Co., Ltd.

332-7, Samsung1-ro, Hwaseong-si, Gyeonggi-do, 18380, Korea

Phone +82.31.605.1000

Email ray_sales@raymedical.co.kr

Web www.raymedical.com

RBS-FS01 (rev.0)

Design and specifications are subject to change without notice